



Post 16

@ Coppice School





RESIDENTIAL TRIPS

- LIFE
- FUTHER EDUCATION
- EMPLOYMENT
- INTERNSHIP

OPEN AWARDS



DUKE OF EDINBURGH



FRIENDS, RELATIONSHIPS & COMMUNITY



INDEPENDENT LIVING & HOUSING

HARMONY HOUSE



LEISURE



HOSPITAL

GOOD HEALTH & WELLBEING

EMPLOYABILITY



TRAVEL TRAINING



FARM

GROW & SELL



COPPICE MAKE & SELL

WORK PLACEMENT



Coppice cafe



Coppice School

THE BRIDGE

Welcome to Post 16



Post 16 Offer

The aim of our Post 16 Curriculum is to provide all our learners with meaningful and individualised learning experiences, empowering them to make informed choices, preparing them for life after Coppice.

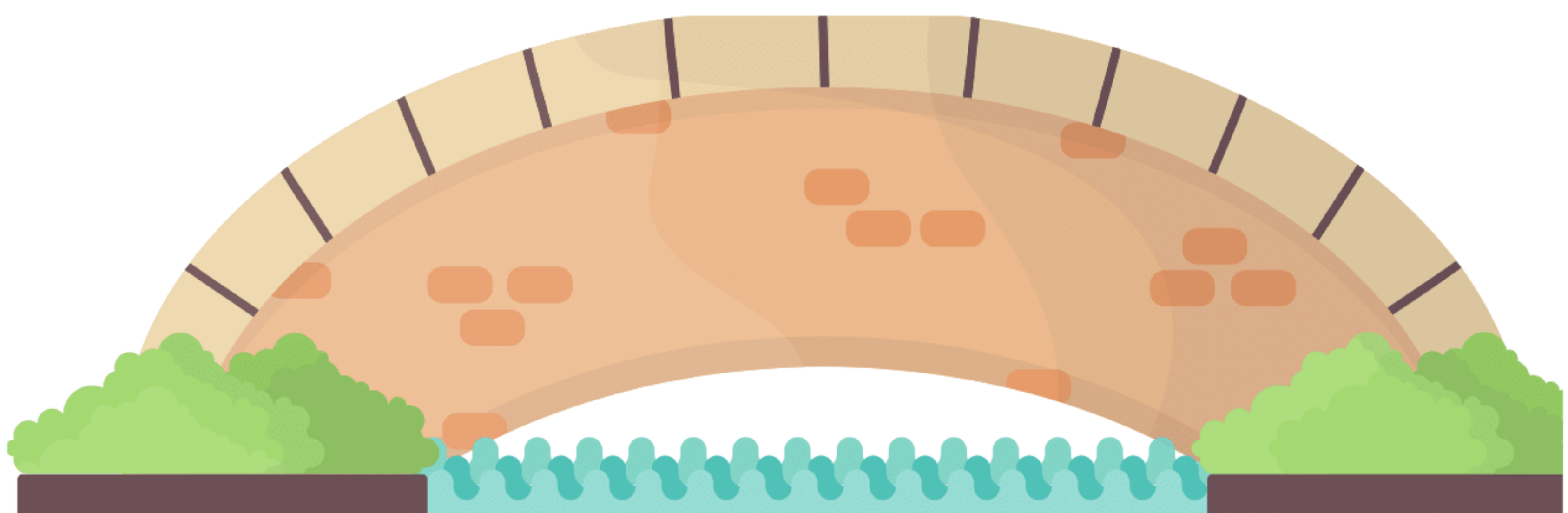
The aspirations of our young people and their families are at the heart of our curriculum and learners receive a challenging and personalised curriculum that centres around meaningful EHCP outcomes. The curriculum is built around learner interests whilst returning to the core values of the Preparing for Adulthood areas.

The curriculum builds on real life experiences and project-based learning with accreditation linked where appropriate so learners can achieve qualifications as well as building the skills to prepare them for life after Coppice School.

There are three pathways within Post 16;

- Preparation for Further Education and Employment**
- Preparation for Independent Living**
- Preparation for Community Inclusion**

Learners work towards Open Awards accreditation in Independent Living and Skills for Further Education and Employment. Learners also work towards sitting Functional Skills exams Entry Level 1 - Level 1. Where this is not appropriate, learners work on developing everyday English and Maths skills through a holistic curriculum driven by employability and independent living.



Post 16 Pathways

There are three pathways within Post 16 at Coppice School, while learners follow a pathway, we understand that each young person is unique and therefore our provision is fluid to best suit the young person's needs.

Preparation for Further Education and Employment
Preparation for Independent Living and Employment
Preparation for Supported Independence and Community Inclusion

1

Preparation for Further Education and Employment

This pathway is delivered at our Coppice Campus and also at our Employability Hub at The Bridge. Young people spend time at each location throughout the week as they work towards accredited qualifications in Employability, Independent Living and Independent Travel Training.

Young people work towards Functional Skills qualifications in English and Maths, we deliver this from Entry Level 1 through to Level 2.

Over three years, learners will work towards three Open Awards accredited qualifications – **Diploma in Further Learning and Employment, Diploma in Independent Living and Certificate in Travelling Independently**. This is usually delivered at **Entry Level 2** and/or **Entry Level 3**.

Young people will also work towards their Duke of Edinburgh Gold Award, completing expeditions and residential experiences across the three years. There is a strong focus on Further Education and Employment, young people will regularly visit Post 19 education providers and also work towards completing at least one external work placement opportunity. Throughout the three years, they will have various employer engagements and industry visits in order for them to make an informed choice about their future.

2

Preparation for Independent Living

This pathway spends the majority of their week at the Coppice Campus and has access to The Bridge employability hub.

Young people work towards moving on to Functional Skills qualifications where appropriate and follow a practical English and Maths curriculum. Over three years, learners will work towards Open Awards accredited qualifications – **Diploma in Further Learning and Employment, Diploma in Independent Living**. This is usually delivered at **Entry Level 1** and/or **Entry Level 2**.

Young people follow an informal Travel Training curriculum that involves safety in their local community and accessing public transport with support.

Young people work towards Duke of Edinburgh's award, from Bronze Award through to Gold where appropriate over three years. This involves short expeditions and local residential.

There is a focus on Employability and Independent Living Skills as well as Community Access and Inclusion. Young people are encouraged to make informed choices about their future and places they like to access or visit. Young people will complete internal work placements and where appropriate, supported external work experiences. Over three years, young people will visit a range of Post 19 settings so they can make an informed choice of destination when their Coppice journey ends.

3

Preparation for Community Inclusion

Young people following this pathway will spend the majority of time at Coppice with many opportunities to access their local community.

Over three years, learners may work towards Open Awards accredited qualifications – **Diploma in Further Learning and Employment, Diploma in Independent Living**. This is usually delivered at **Entry Level 1**. Where this is not appropriate, young people will work towards pre-entry AQA awards and a pre-formal/informal curriculum that focuses heavily on EHCP outcomes across the Preparing for Adulthood Framework.

There is a strong focus on supported living skills and community, young people also access internal work placements and where appropriate, external experiences of work, either individually or as part of a small group.

Preparing for Adulthood

Our Curriculum focuses on the four areas of Preparing for Adulthood, Employability; Good Health and Wellbeing; Friends, Relationships and Community and Independent Living.

These are then divided into smaller sections which link to EHCP Outcomes and Accreditation where appropriate.

Independent Living and Housing

- Looking after myself
- Looking after my home
- Shopping for food and household items
- Cooking

Good Health and Wellbeing

- Healthy Mind
- Healthy Body
- Healthy Lifestyle

Friends, Relationships and Community

- Travelling independently
- Your community
- Relationships

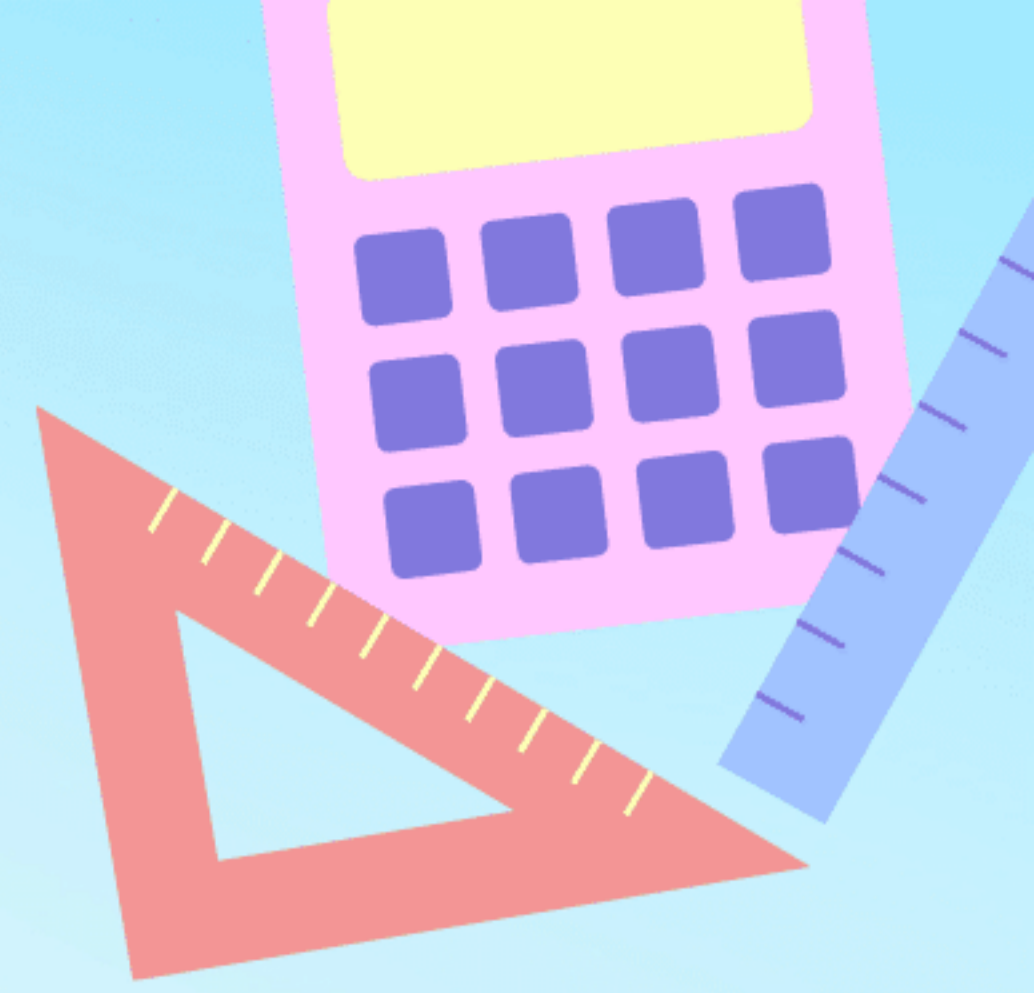
Employability

- Personal Development
- Vocational Skills





English and Maths



Staff have extremely high expectations for Maths and English in Post 16. Where appropriate, learners will work towards sitting Functional Skills examinations during their time in Post 16 at Coppice School.

English and Maths sessions are bespoke, with small groups working around the same level. Sessions are delivered at Pre-Entry (those who are not yet ready to sit a Functional Skills Examination), Entry Level 1 through to Level 1

For those young people who are following the Community Inclusion Pathway, English and Maths is embedded throughout the curriculum with a strong focus on Communication and Life Skills. These sessions are planned using Whole School Progression Maps.

Reading will naturally happen and be promoted through recipes, leaflets, menus etc both whilst in school and out in the community we also promote Reading for Pleasure with a Post 16 Core Book List.

Other opportunities to promote reading for pleasure are offered on a personalised basis, with young people identifying texts and mediums that they personally enjoy including joke books, blogs, poetry and creative writing sessions.



The World of Work

Employability is a core focus within Post 16 with all learners contributing to a number of **Enterprises**. We have access to a market stall within Doncaster Market, with a rotating program of Cricut Personal Designs, Floristry and Second-Hand Clothing. Within school, we have a Cafe, serving staff and pupils across the week as well as seasonal enterprises. The whole process is led by learners with profits reinvested into the enterprise or put towards enrichment activities.

We believe all learners should experience the world of work. We endeavour to offer bespoke placements based around learners' areas of interest, where external placements are not appropriate, learners can apply for internal positions including Office, Retail, Hospitality and Catering, Grounds Maintenance, Horticulture and Childcare.

External placements are offered to those who are ready to access the world of work - these include Education, Social Care, Retail, Hospitality, Print & Design, Travel and Tourism.

All work experiences and placements are personalised to our learners needs, our support staff act as 'job coaches' providing the appropriate level of support and gradually fading as the learner builds confidence and skills.



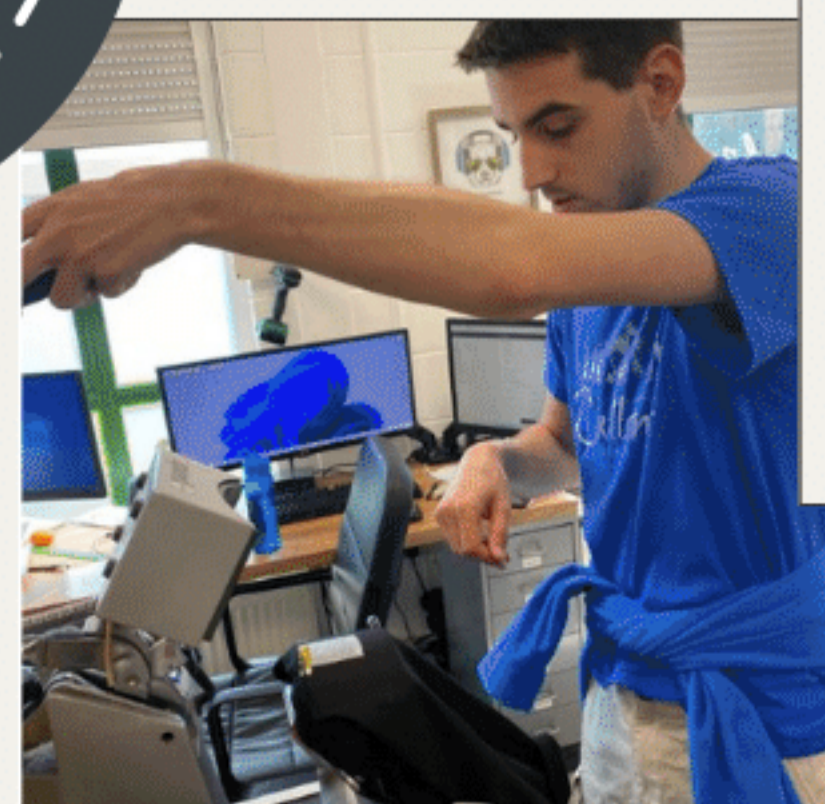
JOEL
RED LION



ELLIOT
OWSTON HALL



CONNOR
FIRST BUS



SAM
PANDR



ELLA
HATFIELD HOUSE, CARE HOME

Independent Living and Community

Independent Living

Learners plan, shop, prepare and cook school dinners for the whole of Post 16 using our commercial kitchen.

They also learn key independent living skills to be able to live as independently as possible.

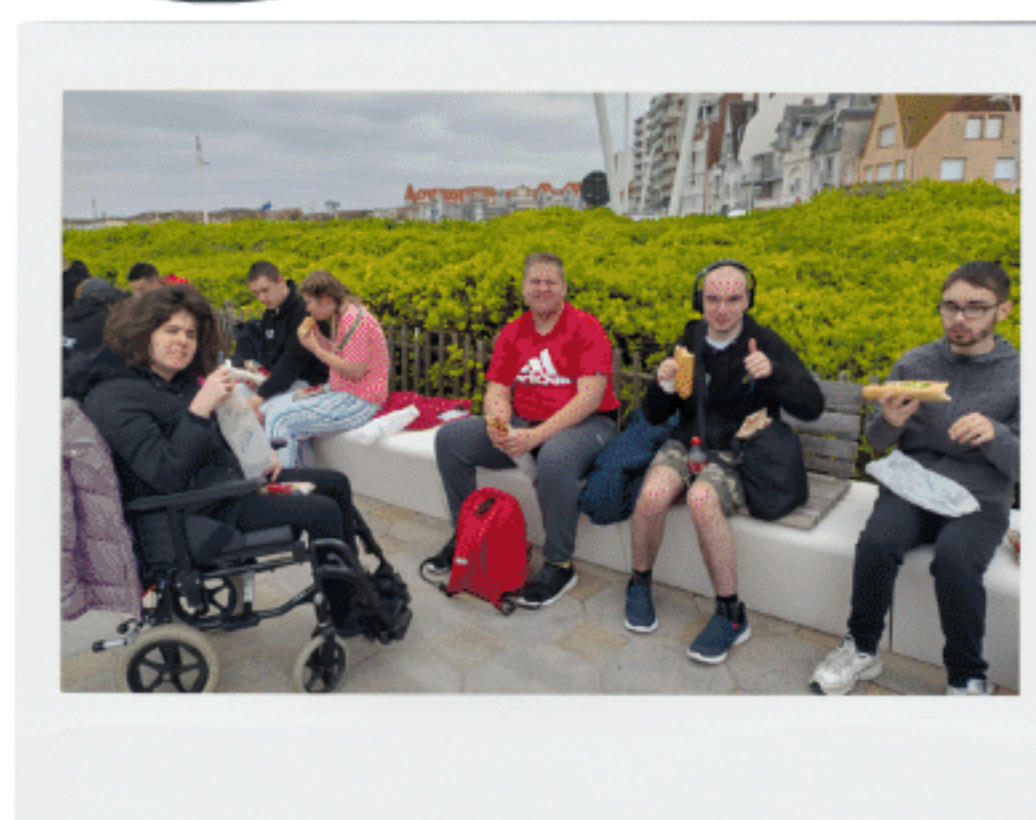
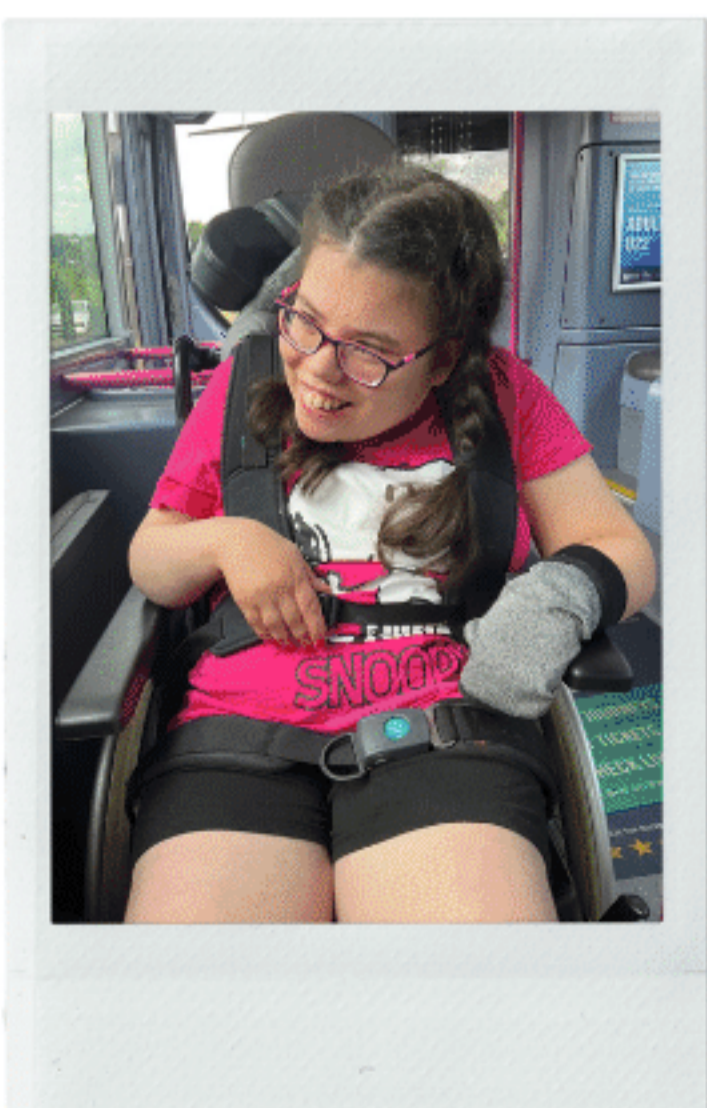
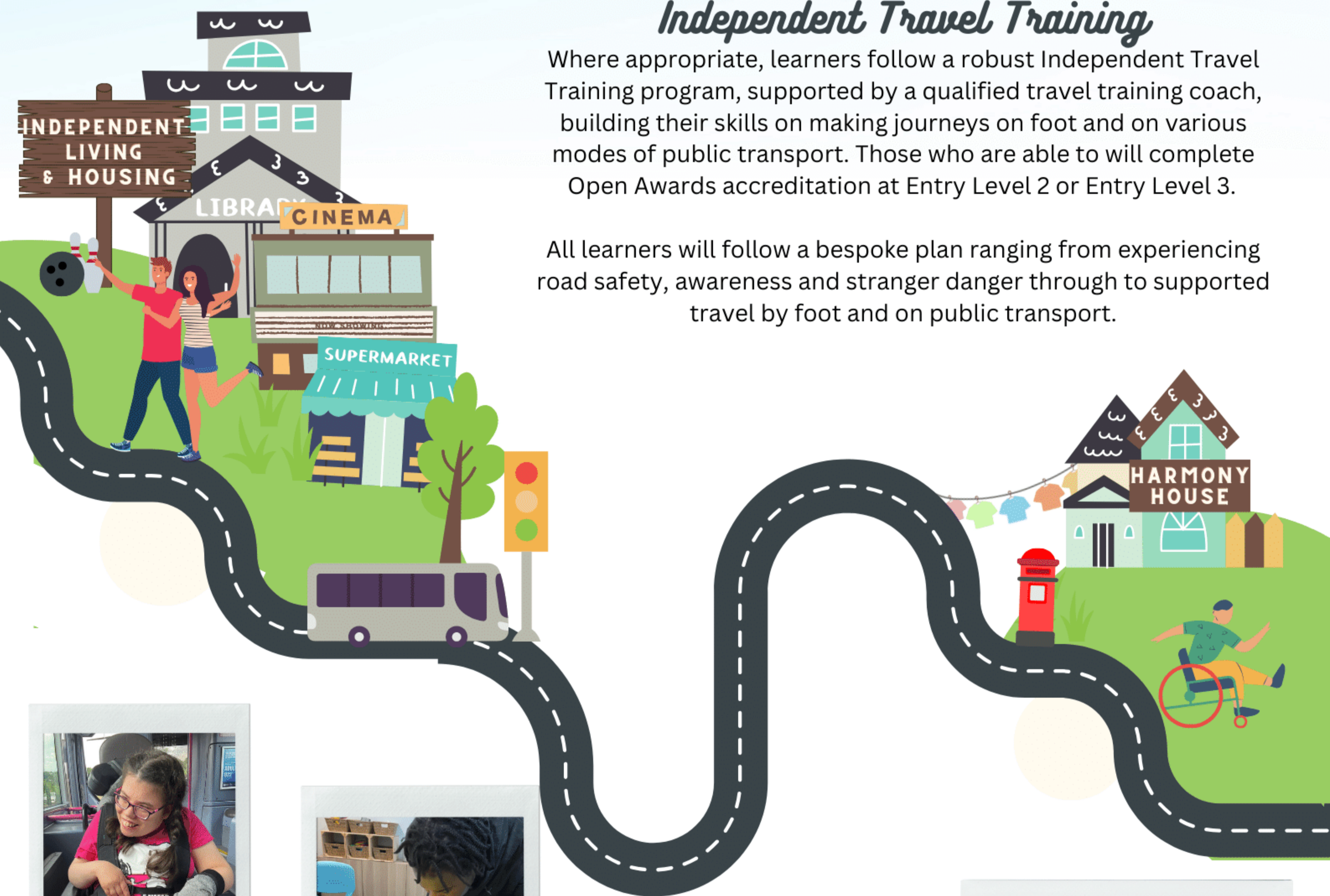
Community Visits

A huge emphasis is placed on accessing our local community. Learners plan and participate in a number of leisure activities, work towards joining local clubs and groups, access supermarkets and shops and visit cafes and restaurants. All community visits are based on learners' needs, interests and hobbies.

Independent Travel Training

Where appropriate, learners follow a robust Independent Travel Training program, supported by a qualified travel training coach, building their skills on making journeys on foot and on various modes of public transport. Those who are able to will complete Open Awards accreditation at Entry Level 2 or Entry Level 3.

All learners will follow a bespoke plan ranging from experiencing road safety, awareness and stranger danger through to supported travel by foot and on public transport.





Residential Opportunities

As part of our enrichment offer, we encourage learners to participate in a residential. In Summer 2022, 6 of our Pathway 1 learners took part in a 5 day residential to Merksplas in Belgium. Here they participated in the Special Olympics and competed against other young people from the Netherlands, Belgium, Germany and Poland. One of our learners came home with 4 gold medals!

In May 2023, 20 of our Post 16 learners went on a 4 day residential to Northern France. We took a ferry over the channel, went to a theme park, the seaside and feasted on french cuisine and delicacies.

Duke of Edinburgh's Award

To enrich the education offered, learners have access to work towards the Duke of Edinburgh's Award (DofE), this is a non-competitive, internationally recognized program designed to encourage young people to develop positive skills and lifestyle habits.

At Bronze level, learners take part in a one-night expedition, camping at Squirrel Wood. Silver Level learners have a two-night expedition, camping at Walesby Forest. If learners get up to Gold Level, it's a trip to Buckingham Palace to meet the King!





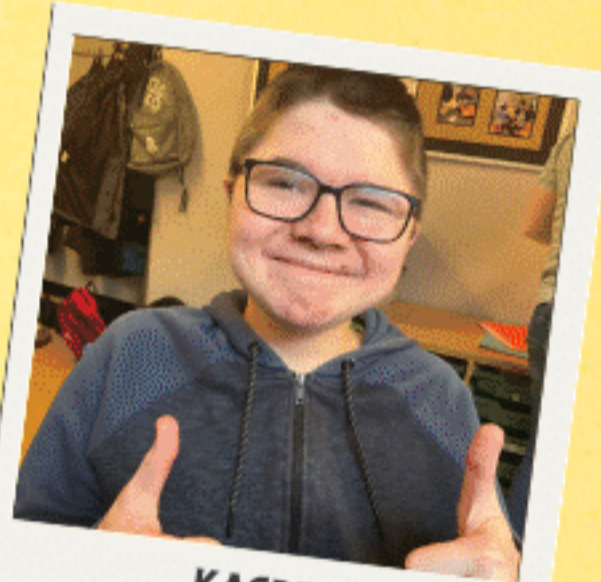
Life after Coppice



We have strong relationships with local Post 19 education providers and those who offer community learning. We ensure that all learners have a robust transition and can make informed choices over the next stage in their lives. Through annual reviews of the Education, Health and Care Plan, and as part of the learners curriculum, we will work with learners and their parents/carers from the earliest opportunity. This allows us to build a transition plan that meets learner needs and aspirations.

Case studies

Meet some of our ex-students and where they are now...



KACPER
DONCASTER COLLEGE

Further Education

Some of our students move on to a Further Education College such as Doncaster College or Dearne Valley College.

Colleges offer Vocational Courses in students area of interest like Sport, Media, Performing Arts and cooking.

They also offer 'Foundation Studies Courses, which are designed for young people with Learning Disabilities.



CHLOE
DEARNE VALLEY COLLEGE

Community Learning

Some students may move into community settings like SMILE Centres, Diamond Centre and Inspired Day Care. They may even have a mix of both community setting and college.



GEORGIA
SMILE & CSC

Specialist College

Some students move on to specialist colleges such as Doncaster Communication Specialist College and The Ridge Employability College

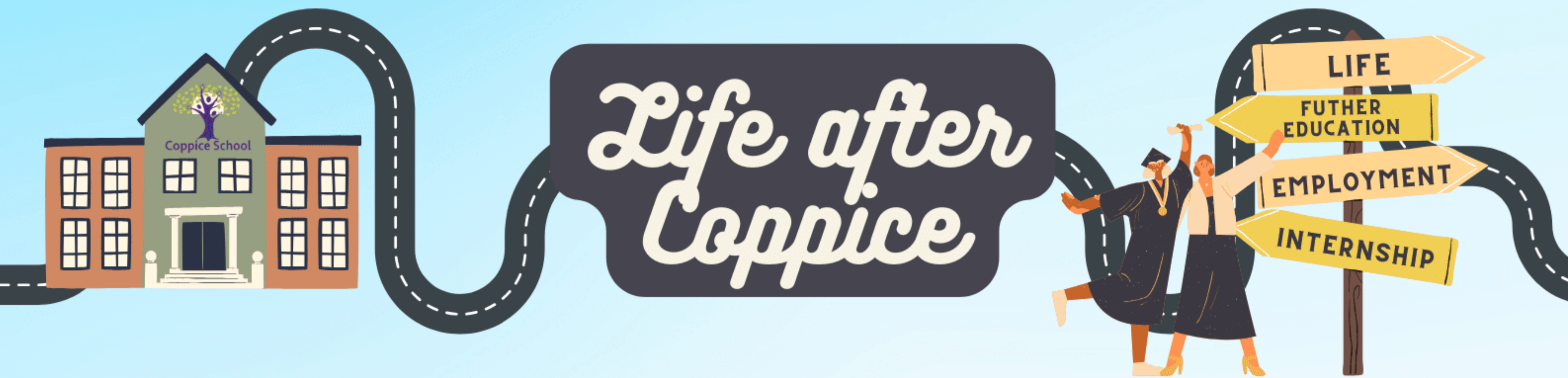


OLIVIA
COMMUNICATION COLLEGE



CONNOR
THE RIDGE

These colleges offer vocational qualifications as well as Life Skills courses.



We recommend visiting the Post 19 settings during Year 13. This way you will have an informed view of what is on offer after Coppice School. As part of the curriculum, we will take the learners to visit the settings in our local area including colleges and day centres. We will also promote Apprenticeships and Supported Internships where appropriate as well as for our learners to move into employment. Here are some of the options available in Doncaster and the surrounding area.



DONCASTER COLLEGE



**COMMUNICATION
SPECIALIST COLLEGE**



**THE RIDGE
EMPLOYABILITY COLLEGE**



**LANDMARKS COLLEGE
ROTHERHAM**



**DEARNE VALLEY
COLLEGE**



INSPIRED DAY CARE



**SMILE DAY CARE
VARIOUS LOCATIONS**



DIAMOND CENTRE

We work closely with the Health and Social Care teams so that we can support with placements and transition to Post 19 settings. This will be discussed during the Annual Review of the Education Health and Care plan.



**Coppice School
Ash Hill Road
Hatfield
Doncaster
South Yorkshire**

DN7 6JH

01302 844883

<https://www.coppiceschool.com/school-information/classes/post-16/>



Chris Medwell - Post 16 Lead